

McAfee Web Reporter



Business today is more Internet-dependent than ever before. From mission-critical services to productivity tools, Internet access to information, resources, and communications is indispensable. But this critical infrastructure can also deliver productivity drains, liability risks, bandwidth waste, and malware infection. Safe surfing from within the business requires enterprise-class solutions for both security and traffic reporting. Organizations need scalable, comprehensive reporting to understand their web use and to help ensure compliance.

McAfee® Web Reporter gives organizations the tools they need to understand today's web traffic—quickly and easily. Available for both McAfee® SmartFilter and McAfee® Web Gateway (formerly Webwasher), Web Reporter lets organizations identify trends, investigate potential problems, and analyze security threats as a basis for refining and enforcing policies for secure web access.

Choose from our basic or premium version to match your organization's needs. Basic offers very robust reporting capabilities and is available for no charge with any McAfee Web Gateway or McAfee SmartFilter subscription. McAfee Web Reporter Premium, Gateway Edition offers additional capabilities such as advanced reports, delegated reporting, and custom log processing.

Reporting Output

- Reports can be exported in several formats, including HTML, PDF, XML, and CSV
- Reports can be localized into these 11 languages:
 - » English (US)
 - » French
 - » German
 - » Italian
 - » Portuguese (Brazil)
 - » Russian
 - » Spanish
 - » Chinese (Simplified)
 - » Chinese (Traditional)
 - » Japanese
 - » Korean
- All reports can be:
 - » Stored on the reporting server for viewing within the Web Reporter UI
 - » Saved to a local machine from the Web Reporter UI
 - » Automatically uploaded to an FTP server
 - » Automatically delivered via email

Power and Flexibility in One Solution

These days, you need real-time views into web traffic. McAfee Web Reporter provides this visibility, plus extensive drill-down capabilities and powerful off-line processing. It's the advanced tools you need in one scalable, easy-to-use solution.

This valuable tool lets you:

- View and analyze web traffic in real-time
- Eliminate irrelevant data to understand where your users are really going
- Quickly turn volumes of data into actionable information
- Analyze trends to determine if policy modifications are required, or if security threats are on the rise
- Create reports in rich formats and multiple languages
- Consolidate data from multiple log sources
- Delegate reporting access and privileges based on roles
- Leverage user information from multiple directories simultaneously for both rights administration and usage reporting

Easy to Use

- Gain immediate access to actionable data with minimal configuration using Quick View
- Drill-down to granular detail with point-and-click simplicity
- Instantly email or save any report being viewed
- Save frequently used reports in Favorites for easy access
- Easily customize Quick View for additional detail
 - » Modify date and time ranges, categories, users, sites, and more to quickly pinpoint potential problems
 - » Discover bandwidth consumed by specific sites or categories of sites
 - » Investigate activities such as specific URLs visited or detailed access time
 - » Easily save Quick View reports to advanced report templates for detailed customization
- Easily create reports on productivity, security, bandwidth utilization, and more with grouped categories that consolidate similar categories for comprehensive traffic views
- Eliminate daily maintenance with scheduled reports

Log Management

- Log data can be automatically downloaded by Web Reporter, uploaded to Web Reporter using HTTP/HTTPS/FTP, or processed in real-time from supported products

Supported Server Platforms

McAfee Web Reporter deploys on customer-supplied hardware and supports the following platforms:

- Windows 2000, 2003, XP
- Linux: Red Hat ES 4/5, SUSE Enterprise 9/10
- Solaris 9/10

Supported Database Server Platforms

- Internal database
- Microsoft SQL 2000 & 2005
- Oracle 9i/10g
- MySQL 5.0

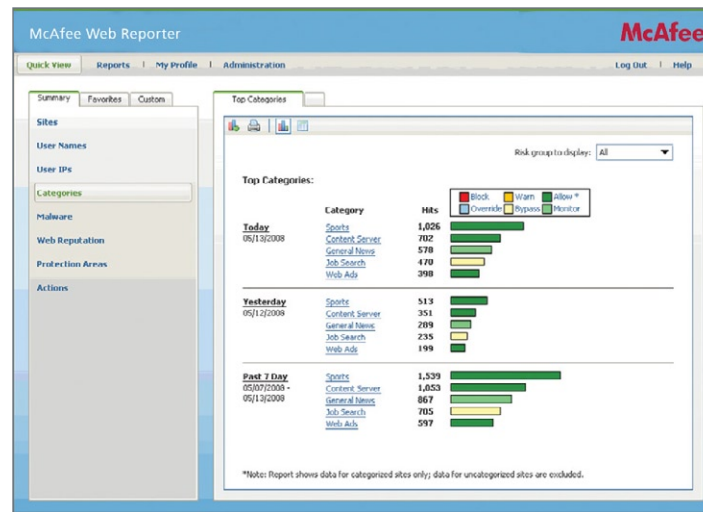


Figure 1: Quick View appears each time you open McAfee Web Reporter and displays actionable data on recent web activity – without running a report. Additional data is accessed simply by clicking on an active link.

Powerful Advanced Reporting (Premium Feature)

- Configure customized offline reports
- Define queries based on any number of data fields available within the reporter database, and display the results as tables, 2D/3D graphs, or pie charts
- Define reports using multiple queries with various layouts
- Generate individual detail reports based on the results from another report
- Combine multiple graphs and tables from different queries into a single report or dashboard view
- Advanced reports are available with McAfee Web Reporter Basic, where the first four rows of data are displayed. McAfee Web Reporter Premium, Gateway Edition enables all available data to be displayed.

Delegated Reporting (Premium Feature)

Allow authorized users from various departments, locations, or organizations to generate the reports they need, reducing the reporting burden on IT.

- Restrict access to portions of the report data based on the needs of each individual user. Access can be limited by users, groups, client hostnames, client IP address or address range, or the log source
- Enable full reporting functionality for all administrators, or limit access to functionality such as report generation and delivery options
- Streamline report generation
 - » Run reports as different users or multiple users where one user creates a report for distribution to a group, but each administrator only sees their authorized data
 - » Share queries and templates across authorized reporting users

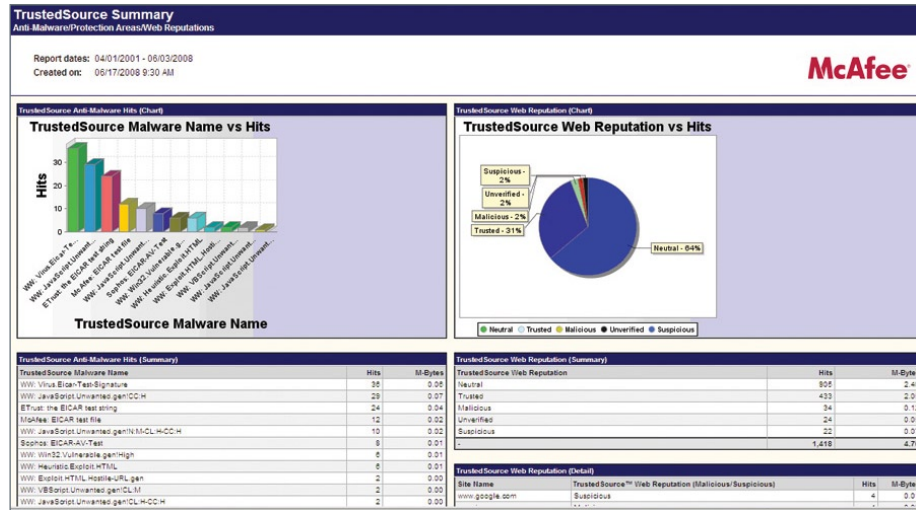


Figure 2: Advanced reporting provides powerful detail and flexibility. Multiple graphs and tables from different queries can be combined into a single report or dashboard view.

Feature Comparison

Feature comparison between Web Reporter Basic and Web Reporter Premium, Gateway Edition.

	Web Reporter Basic	Web Reporter Premium
Web interface	X	X
Drill-down capabilities	X	X
Real-time reports	X	X
Scheduled reports	X	X
Web reports	X	X
Malware/Virus reports	X	X
Browse time calculation	X	X
Delegated reporting		X
Branding customization of reports		X
Custom log format support		X

Advanced Reports

Advanced reports let users specify more detailed report criteria and run jobs for later viewing.

	Web Reporter Basic	Web Reporter Premium
Combined/consolidated reports	(limited to 4 rows of data)	X
Multiple queries	(limited to 4 rows of data)	X
Filters	(limited to 4 rows of data)	X
Default reports	(limited to 4 rows of data)	X

Comprehensive Threat Analysis

- Identify workstations infected with spyware and other forms of malware that are attempting to phone home
- Know what threats were stopped at the gateway and which users were attempting to access these infected sites
- Easily classify threats and determine which McAfee Web Gateway filter blocked the threat
- Understand whether your reputation-based filtering threshold is set appropriately. What is the reputation of all allowed sites? Are too many suspicious sites being visited?
- Understand the details—down to the virus or malware name—to assist with mitigation and clean-up

Performance and Scalability

- Immediate access to data through Quick View reports
- Multiple options to fine-tune reporting for your specific environment
 - » Summary vs. detailed views
 - » Consolidate data into page views where destination URLs are tracked instead of the numerous advertising and additional data URLs that populate pages
- Enterprise scalability
 - » Import multiple gigabytes of logs per day
 - » Generate reports from multiple terabytes of data

Boost Productivity

- Understand productivity drains
 - » Know where users are going and at what time of day
 - » Turn data into action: modify policy to minimize productivity loss
- Understand productivity enhancements
 - » Determine which online tools are important to your organization's productivity and run reports to determine which workstations, users, or groups are using these sites, and what portion of your total traffic is used by these sites
 - » Turn data into action: modify policy to maximize productivity

