

Kaspersky Endpoint Security 8 for Windows

Be Ready for What's Next! Cyber-risks targeting your business have become extremely dynamic and exponentially more complex. Kaspersky delivers comprehensive anti-malware solutions that are powerful, efficient and easy to administer.

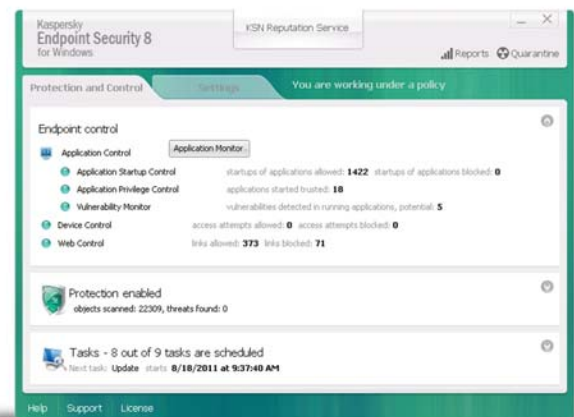
Kaspersky Endpoint Security 8 for Windows – is a powerhouse of protection. Bringing layer upon layer of superior, intelligent protection against emerging and increasingly sophisticated threats – and backed by the relentless anti-malware expertise of Kaspersky. Kaspersky ensures the security of your business so you can stay focused running it.

Deeper Protection:

- ▶ **Enhanced Detection Engine** - Vastly improved malware detection and reduced false positives in file, mail and web traffic.
- ▶ **Kaspersky Security Network (KSN)** - Integration with the cloud-based KSN provides rapid protection from emerging threats based on analysis of real-time activity from the global Kaspersky user community.
- ▶ **Whitelisting and Cloud-Based File Reputation** – Administrative white listing rules as well as Kaspersky's cloud-based file reputation database further protect the system from malicious code and reduce false positives.
- ▶ **System Watcher** - Proactively monitors and analyzes system operations for suspicious activity.
- ▶ **Behavior Stream Signatures Technology** - Identifies dangerous application patterns within a users system.
- ▶ **Rollback of Malicious Activity** - Automatically returns a system to a point before malicious activity occurred.
- ▶ **Advanced Firewall and Intrusion Detection System** - Kaspersky's flexibly managed firewall and Intrusion Detection System align with your application control policies to improve employee productivity.

Includes:

- **Malware protection for Windows-based**
 - Workstations
 - Laptops
 - Servers
- **Security controls for;**
 - Applications
 - Web content
 - Removable devices



Robust business protection tools such as Application Control, Device Control and Web Content filtering can be set and monitored from a refreshed GUI.



Powerful Control Tools:

- ▶ **Device Control** – Allows granular control of external device operations - enforces your usage policies and reduces the risk of data loss.
- ▶ **Vulnerability Scanning** – Avoid potential exploits by identifying system weak points, missing patches and neglected application and OS updates.
- ▶ **Application Privilege Control** – Applies restrictions to various actions of applications in the operating system as well as rights to access computer resources.
- ▶ **Application Startup Control** – Provides administrators the ability to grant, block and audit application launches.
- ▶ **Web Control and Content Filtering** - Monitoring and filtering users' browser activities by category, content and data type regardless of workstation location.

General Requirements:
<ul style="list-style-type: none"> • 1 GB of available disk space on the hard drive • Internet connection for product activation • Microsoft Internet Explorer 6.0 or higher

PC Requirements:	
Operating Systems	Hardware
Windows 7 (x32/x64 Professional/ Enterprise/Ultimate)	2.0 GHz or higher 1 GB RAM
Windows Vista (x32/x64 SP2 and higher)	2.0 GHz or higher 1 GB RAM
Windows XP Professional (x32 SP3 and higher)(x64 SP2 and higher)	GHz or Higher 512 MB RAM
Windows Embedded Standard 7 (x32/x64 SP1) (x32 POSReady 7, POSReady 2009)	800 MHz or higher 256 MB RAM
Server Requirements:	
Operating Requirements	Hardware
Windows Server <ul style="list-style-type: none"> • x32/x64 2003 Standard SP2 • x32/x64 2003 R2 Standard SP2 and higher • x64 Enterprise SP2 and higher • x32/x64 2008 Standard/ Enterprise SP2 and higher 	2.0 GHz or higher 1 GB RAM
Small Business Server 2008 (x64 Standard/Premium)	2.0 GHz or higher 1GB RAM

We invite you to take the Kaspersky Challenge today!

Try Kaspersky on your network or test lab for 30 days. If 30 days goes by and your incumbent software is keeping up with Kaspersky, then you can feel validated that you're adequately protected. But you should also test Kaspersky's management, automated tools, reporting and dashboard for flexibility and ease of use. Experiment with Kaspersky on your smartphones and other mobile devices. Does Kaspersky adapt to your complex network better? Are you able to use less staff resources to manage the Kaspersky deployment?



We encourage you to discuss your options with your solution provider, or contact us via email at smbsales@kaspersky.com or by phone at (866) 477-0347.

For a free 30-day trial and to take the Kaspersky Challenge, visit our website at kasperskychallenge.com.

Kaspersky Lab
500 Unicorn Park Drive
Woburn, MA 01801

<http://usa.kaspersky.com>
www.securelist.com