



PnC 1000 SB

Compliance impacts all companies no matter their size. Jatheon has developed the PnC 1000 SB – Small Business appliance to give companies the same functionality as Jatheon’s mid-market and enterprise appliances, but at a price point for small organizations.

Jatheon has designed and developed Plug n Comply™, a family of appliance based email and message archiving solutions for companies seeking full regulatory compliance, internal policy management, storage space management, and e-discovery functionality. Jatheon offers an all-in-one comprehensive, cost effective, and easy to deploy archiving appliance. It requires minimal IT support, offering simple management of corporate messaging data and related policy implementation.

With the Jatheon Plug n Comply™ Appliance, companies are provided with a turnkey solution to establish and enforce policies and compliance processes to meet Sarbanes-Oxley, SEC, NASD, Federal Rules of Civil Procedure, and other regulatory and corporate governance requirements.

Advanced Features

The Plug n Comply™ Family of appliances are designed to capture all incoming, outgoing, and internal messages, check all captured messages against user defined rules, flag and notify any violations, as well as index and store messages for future search and retrieval.

Jatheon’s appliances offer comprehensive search functions either through a secure web based interface or by an integrated Microsoft Outlook Plug-in. Companies can also monitor messages for company policy violations or SEC compliance. Users have access to all of their personal data and compliance officers can package information as PST files or export the messages in a Portable Document File – PDF format.

All Jatheon appliances include advanced message reporting, exporting to PDF or PST file formats, the ability to save common searches, audit trail for all activities, LDAP and Active Directory integration, and secure access via a web browser or Outlook Plug-in.

The appliance will work across many network platforms and email systems with interfaces available for MS Exchange, GroupWise and Lotus Notes. In addition to interfacing with messaging platforms, Jatheon has developed an innovative “packet sniffing” stealth acquisition technology that will allow the appliance to capture messages directly from the network even when customers outsource their mail services. The appliance itself is non-intrusive to the network.



Jatheon Solution

- * **Offers a comprehensive compliance workflow that supports all compliance models**
 - Internal Review
 - External Mail Inbound/Outbound Review
- * **Automates identification of suspect content**
 - Simple Policy Implementation
 - Natural Language Processing
- * **Offers a comprehensive audit trail and evidence of review logging and reporting capabilities**
- * **Integrate email archive with Write Once Read Many (WORM) storage devices**
- * **Storage Space Management**
 - Offload electronic message data from active servers into manageable secure archival storage – safely preserved and searchable for years. Consistently provides a 10:1 compression ratio.
- * **E-Discovery**
 - Ability to rapidly search and retrieve messages

System Specifications

System:

Processor: 1 x Intel Xeon 3060 2.4 GHz Processor with 4MB Cache; 1066 MHz FSB
 Memory: 4 x 1GB PC2-5300 DDR2 SDRAM; 8GB Max
 Chipset: Intel 3000
 Network: 1 x Intel 82573V Gigabit Ethernet; 1 x Intel 82573L Gigabit Ethernet
 SATA: 4 Serial ATA ports

Chassis:

Form Factor: 1U; rack-mountable chassis
 Dimensions: 17.2" x 1.7" x 19.8" (WxHxD)
 Cooling System: 3 x 4cm 12,500 RPM blower fans
 Weight: 44 lbs / 20 kilos

Storage:

4 x Seagate Barracuda 7200.10 320GB Serial ATA 3.0 Hard Drives
 1 x Pioneer DVR-K06 8x Slim Slot DVD-RW Drive
 1 x Sony Slim Floppy Drive

Graphics:

Onboard ATI RageXL graphics, 8MB

Multiple I/O:

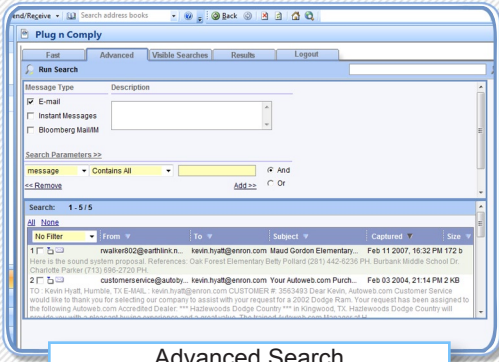
USB: 2 x Rear USB 2.0 Ports
 Serial Ports: 1 x Serial Port
 Parallel Port: 1 x Parallel Port
 Compact Flash: 1 onboard compact flash 40-pin White IDE connector
 Keyboard/Mouse: 1 x PS/2 K/B, 1 x PS/2 Mouse
 LAN: 2 x LAN Ports, RJ-45

Front Panel:

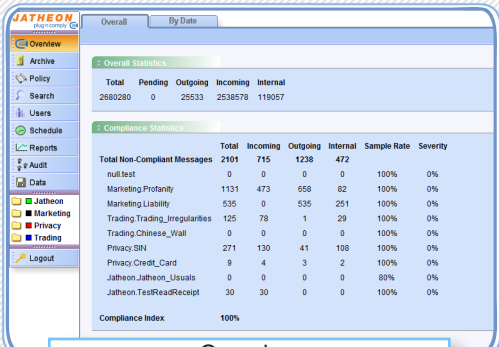
Power On/Off button
 System Reset button
 1 x Power LED
 1 x Hard drive activity LED
 2 x Network activity LEDs
 1 x System Overheat LED
 2 x USB 2.0 Ports
 1 x Serial COM Port

Power Supply:

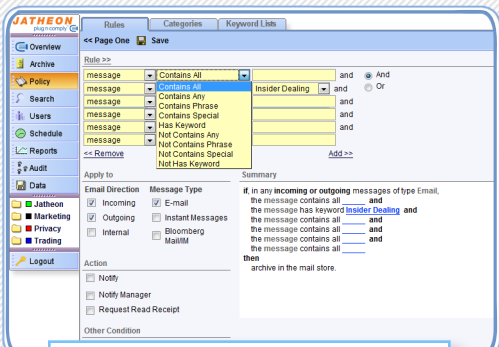
Fixed 300W AC power supply w/ PFC
 UL Approved, FCC Compliant



Advanced Search



Overview



Policy Creation

