

Deepnet Unified Authentication

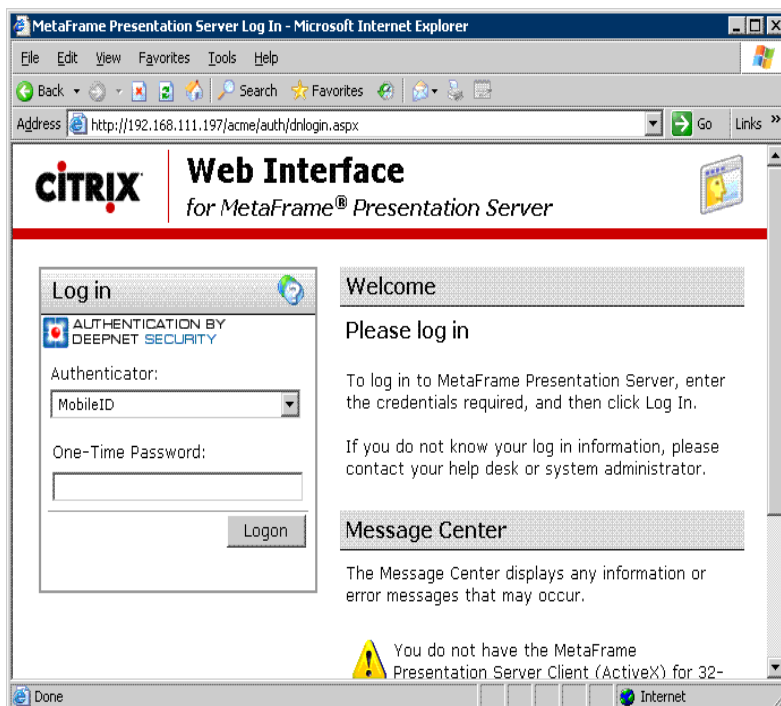
for Citrix Web Interface

The Citrix Access Platform makes it easy to give all users across the organization including local and remote employees, branch locations, partners and suppliers fast, simple and secure access to business critical applications. With its centralized model, Citrix Presentation Server enables IT to implement and deploy applications such as CRM, SFA and ERP faster than if they had to be installed and configured on each computer.

The ease-of use and flexibility of Citrix solutions make them more vulnerable to password theft. Deepnet offers a strong authentication solution fully integrated with the Citrix Web Interface to enable secure, easy and cost-effective access to corporate applications and data through Citrix.

Citrix Web Interface is an application deployment system that provides users with access to MetaFrame applications through a standard Web browser. Each user is presented with all the applications published in the MetaFrame server farms for that user. With Web Interface, administrators have centralized application management capabilities and complete control over the application deployment process.

Deepnet Unified Authentication for Citrix Web Interface is a two-factor authentication solution designed specifically for securing access to corporate applications and data through Citrix, without the requirements of new hardware devices. Deepnet Unified Authentication Platform utilizes the devices users already have (computers, mobile phones, PDA etc) or the user's behavioural biometrics (typing pattern, voiceprint), as the second factor. This eliminates the need to distribute new hardware, making the system cost effective, user friendly and simple to manage.



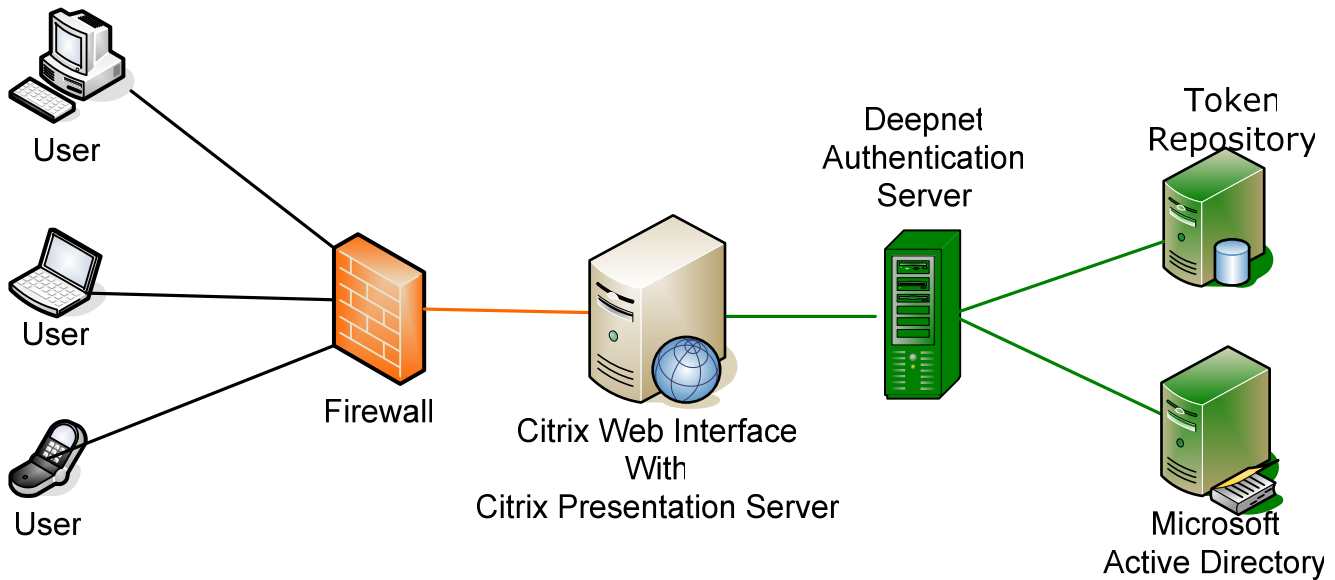
KEY BENEFITS

- Enhanced security and compliance**
 Enforces two-factor authentication. Addresses IT security and compliance requirements by preventing unauthorized access to information.
- Ease of deployment**
 The solution integrates seamlessly with the Citrix environment.
- Reduced administrative costs**
 Lower cost of issuing and managing tokens through web-based Management Console and Self Help services.
- Return on investment**
 Deepnet Unified Authentication Platform can also be used to secure access to a wide variety of corporate applications including Citrix Access Gateway, VPN, OWA, Windows Logon and Web applications.

Technical Overview

Deepnet Unified Authentication for Citrix Web Interface consists of the following major components:

- Deepnet Authentication Server
- Token Repository Server
- Microsoft Active Directory Server



These servers can be installed and operating on separated machines or on a single machine, depending on the scale of the customer's business applications.

Deepnet Authentication Server

Deepnet Authentication Server is a secure, scalable, cross-platform authentication server that centrally controls access to web applications. Deepnet Authentication Server is designed to be deployable across a wide range of commonly available platforms that supports Java. Therefore, it can run on Windows, Linux, Unix, Sun OS and many mainframes.

Token Repository

Deepnet Authentication Server uses a SQL database server as its token repository. It can be connected to the customer's existing SQL server (MS-SQL 2000/2003, Oracle) or MySQL server which is included in its installation package.

Active Directory

Deepnet Authentication Server supports assignment of tokens to users residing in Active Directory without modification of the directory schema. User data is not imported from the directory into Deepnet Authentication Server. Instead, Deepnet Authentication Server queries the directory during the authentication process to validate the user's status. Changes made in the directory are automatically and immediately reflected in Deepnet Authentication Server.